

£250,000

Old Park Mews

Hounslow, TW5 0QF



PROPERTY SUMMARY

SHARE OF FREEHOLD!!!!

A fantastic opportunity to acquire a two bedroom first floor apartment in Old Park Mews Heston offered with an added benefit of a private garage. This property is ideal for buyers looking for a home they can fully modernise and personalise to their own taste.

The accommodation comprises a spacious reception, separate kitchen, two bedrooms and a bathroom. The apartment is in need of modernisation, making it an excellent project for first time buyers, investors or developers seeking a value add opportunity in a convenient West London location.

Old Park Mews is well positioned for access to local shops, schools, bus routes, with Heston, Hounslow , Osterley & Heathrow all within easy reach.

Tenure: Leasehold 953 Years ,Share Of Freehold

Annual Service Charge: £975.00

Annual Ground Rent: Nil

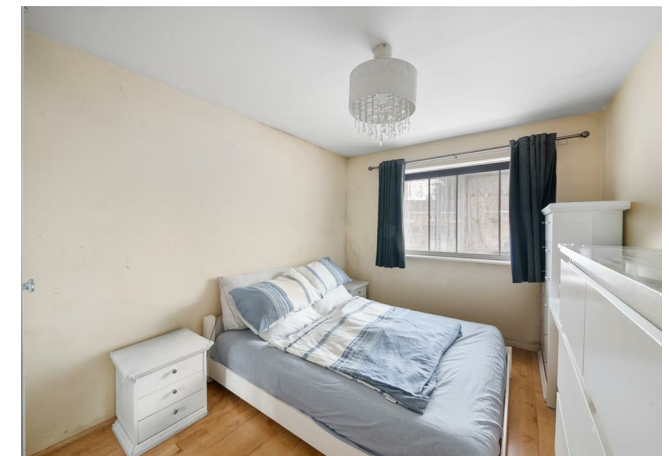
2



1



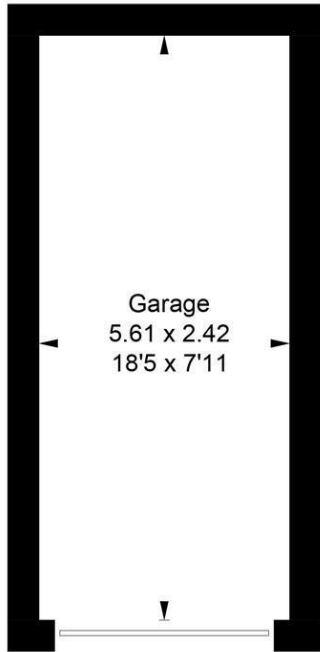
1



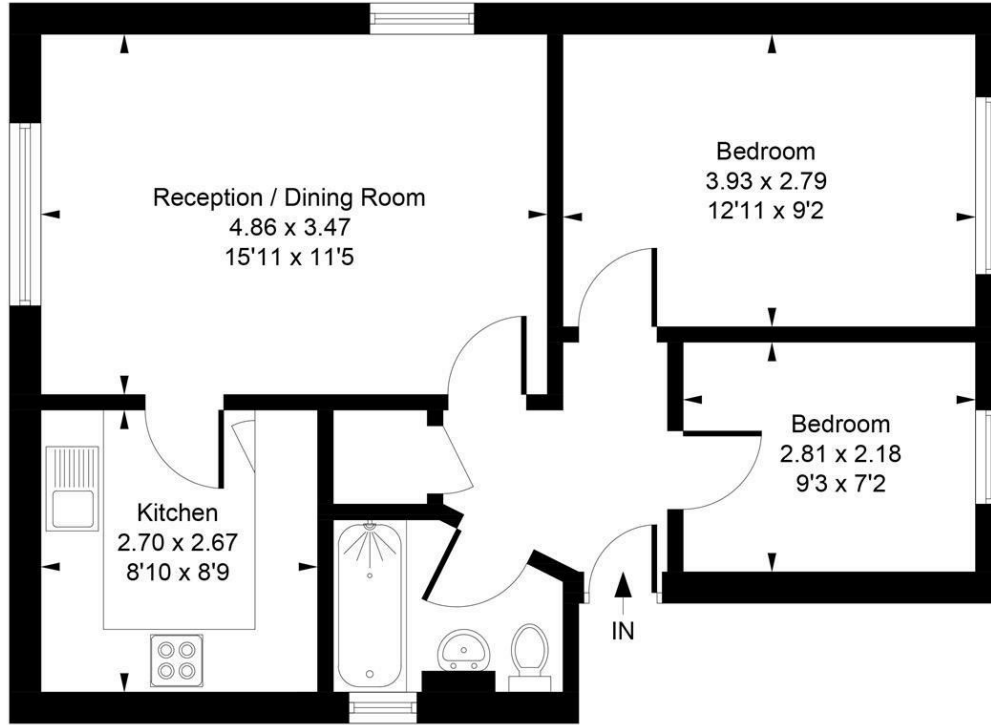




Approximate Gross Internal Area = 51.99 sq m / 560 sq ft
 Garage = 13.65 sq m / 147 sq ft
 Total = 65.64 sq m / 707 sq ft



(Not Shown In Actual Location / Orientation)



First Floor

LOCAL AUTHORITY

Hounslow

TENURE

Leasehold

COUNCIL TAX BAND

C

VIEWINGS

By prior appointment only

Energy Efficiency Rating		Current	Potential
Very energy efficient - lower running costs			
(92 plus) A			
(81-91) B			
(69-80) C			
(55-68) D		67	78
(39-54) E			
(21-38) F			
(1-20) G			
Not energy efficient - higher running costs			
England & Wales		EU Directive 2002/91/EC	



Whilst every attempt has been made to ensure the accuracy of the floor plan contained here, measurements of doors, windows, rooms and any other items are approximate and no responsibility is taken for any error, omission, or mis-statement. This plan is for illustrative purposes only and should be used as such by any prospective purchase.

© Vizion Property Marketing Produced for Shaw & Co.

Agents Note: Whilst every care has been taken to prepare these particulars, they are for guidance purposes only. All measurements are approximate and are for general guidance purposes only and whilst every care has been taken to ensure their accuracy, they should not be relied upon and potential buyers/tenants are advised to recheck the measurements

Shaw & Co
ESTATE AGENTS

OFFICE ADDRESS
 10 Central Parade
 New Heston Road
 Heston
 Middlesex
 TW5 0LJ

OFFICE DETAILS
 0208 570 7258
 heston@shawandcoestates.com